

SCHOOLS & FAMILY

# LEARNING

## Educational visits SECONDARY

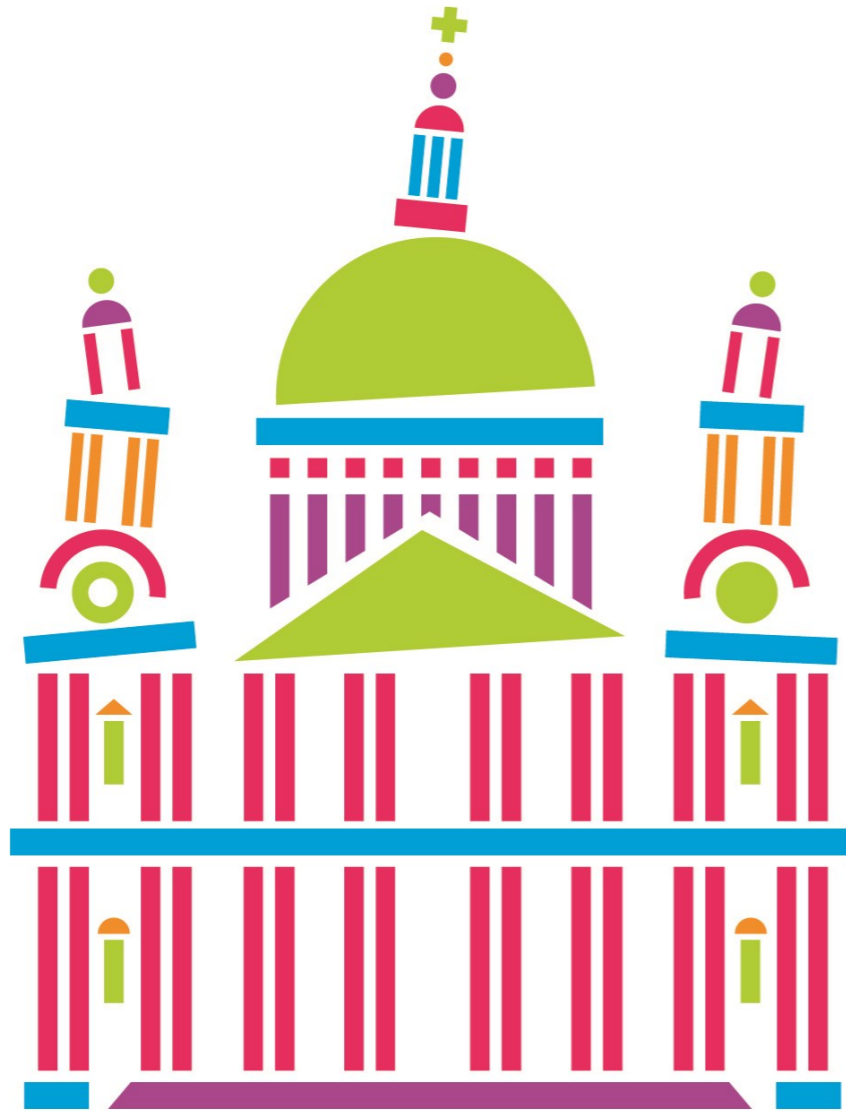
INFORMATION FOR TEACHERS  
AND COMMUNITY GROUPS

KS3

KS4

KS5

SEND



# Welcome to the iconic cathedral in the City of London

St. Paul's Cathedral can offer so much to support teaching in school

## Who are we?

The Schools and Family Learning Department are based in St Paul's Cathedral. We are a team who include teachers and education professionals with a wide range of specialisms. We work with both the amazing architecture and St. Paul's role as a Christian place of worship, linking it all into the National Curriculum, your local agreed syllabus, and qualification specifications.

## What can teachers expect to gain by visiting?

We offer a diverse range of subject based sessions, which link directly into the building's history and use as a place of worship. A visit to us will give your students the opportunity to put classroom learning in context through differentiated, high quality, guided sessions.

## We are recommended by teachers

99.3% of teachers bringing a school group in 2022 regarded their visit to us as 'good-excellent' (out of a total of 23,000 children and young people visiting).

*"Wow - this was the best school visit we have done! We could not have wished for more knowledgeable, friendly and supporting staff working with our children from your learning team. From the point of booking to the day they had our children's learning at the core of everything they did. They provided an excellent tour and work session which encompassed everything we hoped for and more. Children were mesmerised and engaged by not only the wonderful architecture but the insightful and interesting knowledge from our guides. This kept all children engaged. When else would our children have the opportunity to lay on the floor of St. Paul's and explore the wonderful mosaics, sing whilst sitting in the choir and have the chance to talk to clergy and take part in worship within this wonderful space. Thank you so much - we would recommend to everyone and I'm sure we will be making a return visit."*

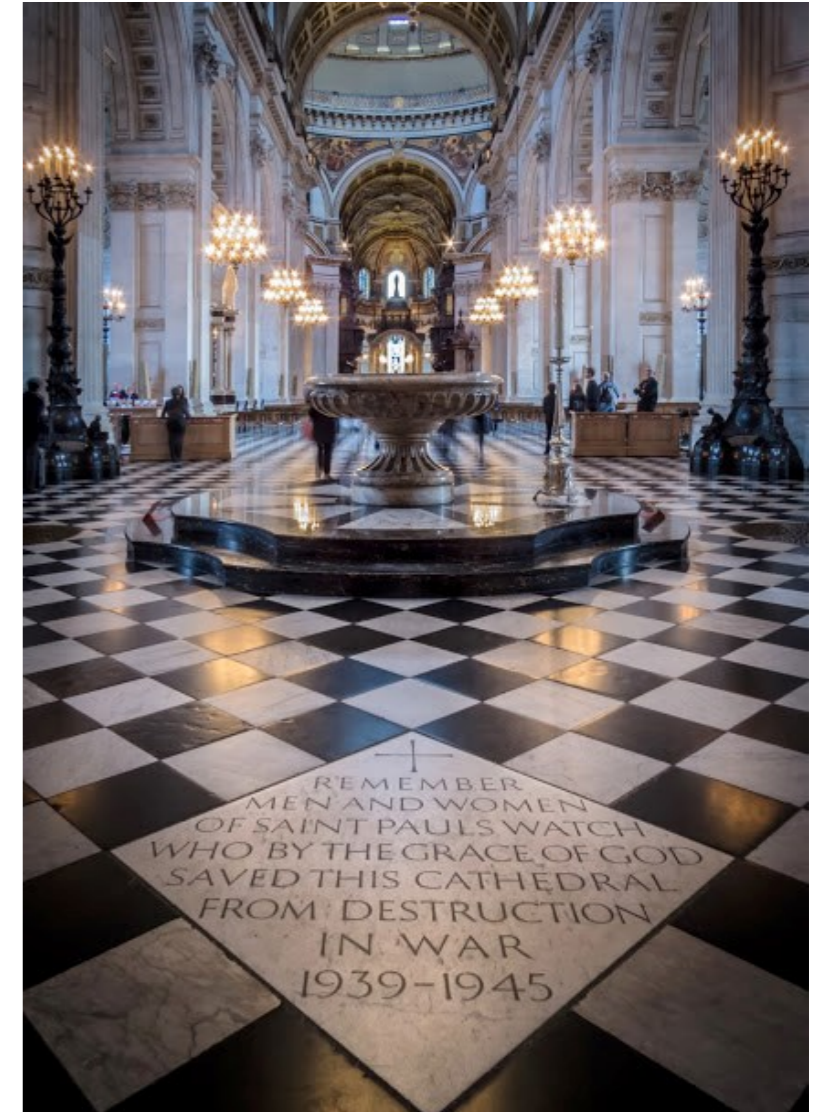
Primary school teacher November 2022



Create a bespoke visit to meet your learning objectives

An introduction to an iconic space in which you may:

- Explore the religious symbolism of the Cathedral's artefacts and art.
- Learn about how historical events such as the Great Fire of London in 1666 and World War 2 have shaped St Paul's.
- Visit the tombs and memorials of Florence Nightingale and Sir Christopher Wren.
- See works of art by artists such as Bill Viola, William Holman Hunt, Henry Moore and Gerry Judah.
- View the mosaics in the Quire.
- Think about the role the Cathedral plays in London today as the nation's church.



Aims of the visit:

- To introduce students to all aspects of St Paul's Cathedral, past and present.
- Can be tailored to your own aims and objectives
- To see the highlights of the Cathedral



**Key Stage Suitability:**

- All Key Stages



## Exploring Christian ethics

### Part 1 - Guided Tour:

- Whilst being guided around the Cathedral students' attention will be drawn to areas, objects and art that relate to issues such as war, peace, remembrance, suffering, birth, and morality, beliefs and practices including the eucharist, baptism, leadership and exploring the creation story.

### Part 2 - Q&A :

In our classroom, students will meet a priest to engage in discussion on moral/ethical issues such as:

- Sanctity of life/euthanasia
- Suffering and death
- Human rights
- Sexuality

### Aims of the visit:

- To challenge and engage students through deep thinking, discussion, and debate on a variety of philosophical and ethical issues affecting the world today.
- To help prepare student's for their exams.



### Key Stage Suitability:

- KS3
- KS4
- KS5
- Particularly suited to students of GCSE RS and A Level RS (Christianity, Philosophy or Ethics)

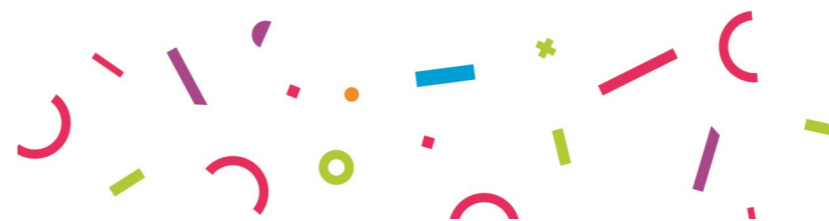


## Learn more about what happens in a Christian place of worship

- Encounter religious symbolism through exploring the design of the Cathedral
- Look at furnishings (altar, pulpit, lectern, baptismal font) and understand how they are used for prayer and worship
- Explore events in the life of Jesus as the key figure in Christianity, and investigate what his incarnation means for Christians today
- Find out about the daily service of the Eucharist/Holy Communion and its importance in churches around the world
- Consider how sculpture, paintings and mosaics in the Cathedral depict festivals such as Christmas and Easter
- Examine Christian theology through close consideration of a piece of artwork.

### Aims of the visit:

- To bring the Cathedral alive as a place of prayer and worship.
- To enhance teaching of the of RS/RE/your local syllabus: practices and ways of life in religions, worship, beliefs, symbols and religious expression, sacred places, and sacred occasions.
- Preparation for GCSE RS



### Key Stage Suitability:

- All Key Stages



## Church power and empire

Discover how the monuments at St Paul's Cathedral can inform understanding of the British Empire and its influence and impact on the wider world.

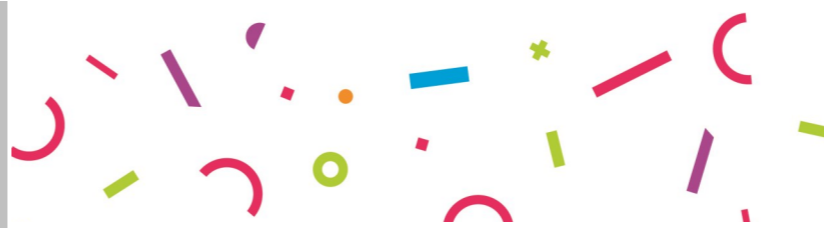
Explore the themes of the monuments through response pieces by contemporary poets, artists and historians created as part of the '50 Monuments in 50 Voices' project. Using the contributed art and poetry works as resources for interactive activities and discussion.

The workshop will, through discussion and creative response activities, build student's skills in critical and reflective thinking and will provide opportunity for students to share opinions and feelings around the national conversation taking place about public monuments and contested history.



### Aims of the visit:

- Engage in historical enquiry to develop as independent learners and as critical and reflective thinkers
- How people's lives have shaped this nation and how Britain has influenced and been influenced by the wider world.



### Key Stage Suitability:

- KS3
- KS4
- KS5



- Explore the Cathedral's story before and after the Great Fire of London and consider the legacy of the Civil War and the destruction of the pre-fire Cathedral.
- Examine archival material and Wren's Great Model to discover how the Cathedral was designed and rebuilt.
- Discover the Anglican Cathedral's baroque style and materials and discuss how it is a product of Restoration culture.
- Discover how Bishops at the Cathedral contributed to the return of the Anglican Church and what role the Cathedral played in the political, economic, social and cultural lives of Londoners in Restoration England.



### Aims of the visit:

- Developed with AQA and tailored for schools choosing Restoration England in the history syllabus.
- Engage with archival material to explore what happened to Old St Paul's during the interregnum and how it was restored after the Great Fire of London.



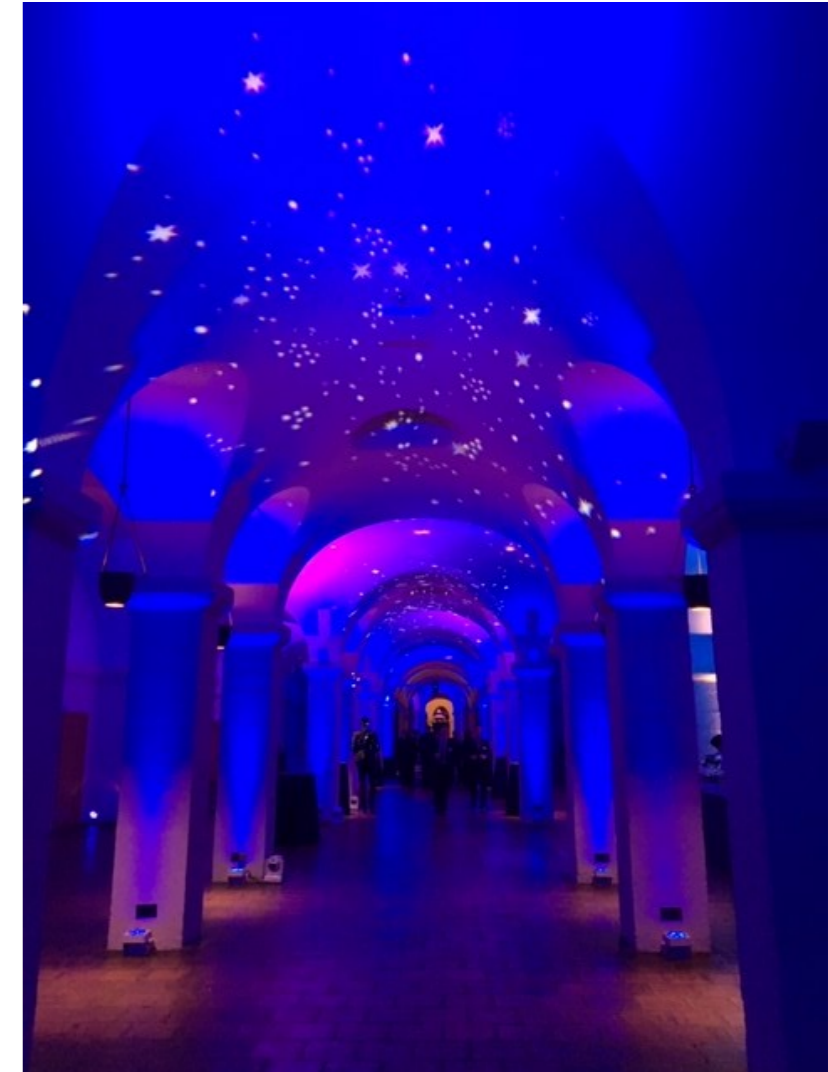
### Key Stage Suitability:

- KS4



## St Paul's role as a church and as a business

- During this visit we pose the question: 'Is it possible for St Paul's Cathedral to be both a place of Christian worship and a viable business?'
- Whilst exploring the Cathedral, students will be encouraged to think about St Paul's as a working Church, a centre for the arts, and a tourist destination
- They will discuss the challenges faced daily for this multi-purpose place of prayer, worship, and business
- Students will have the chance to visit the shop to think about how ethics impact merchandising, and to view bespoke ranges developed with emerging UK based designers
- Subject to availability, students will also hear from a member of the Corporate Events or Visitor Engagement team.



### Aims of the visit:

- To discover the beauty and spirituality of the Cathedral. To investigate the fine line the Cathedral treads between being a sacred space and a major tourist attraction



### Key Stage Suitability:

- KS4
- KS5





Linked to units of study for Art and RS

- Encounter pieces of art from the 18th century to the present day
- Discover paintings, sculptures, icons, video installations and mosaics that depict Christian themes, stories and key figures
- Encounter works by artists such as William Holman Hunt, Henry Moore, Bill Viola and Gerry Judah
- Explore how theology is communicated through a variety of visual media
- Reflect on how art can be a form of religious expression and what it can tell us about faith and Christian beliefs.

## Aims of the visit:

- To discover, observe and respond to the amazing examples of art and design in the Cathedral.
- To examine art as a tool for theological reflection.
- To encourage thought and debate about the value of art in a sacred space.



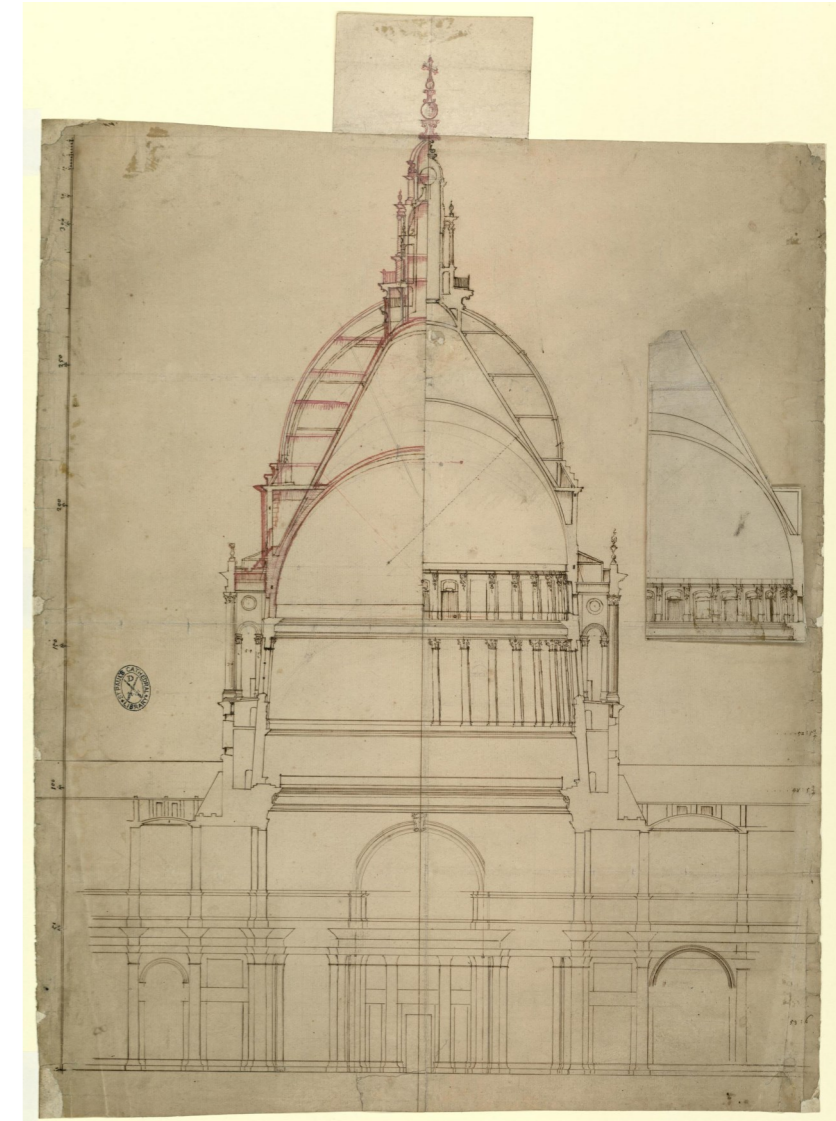
## Key Stage Suitability:

- KS3
- KS4
- KS5



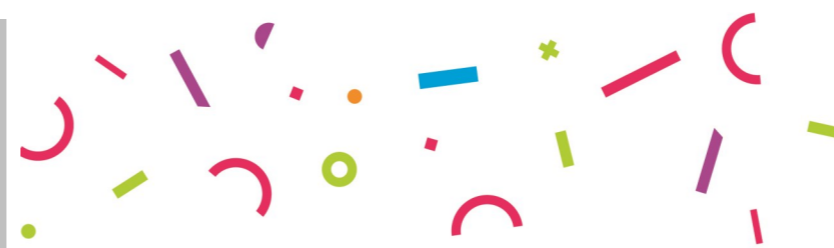
Discover Wren's masterpiece of design linked to units of Maths and Science

- Spend time looking at the design of one of London's most treasured buildings
- Identify materials such as stone, wood and metal, and examine their properties
- Build an arch in a scientific experiment and find out more about the forces and skills involved
- Find out more about Wren's use of sacred geometry
- Go behind the scenes and visit Wren's 'Great Model' in the Triforium and the Geometric Stairs.



## Aims of the visit:

- To enhance Maths and Science teaching about forces, materials and their properties, light, sound, shapes, size and measurement, in the context of Wren's masterpiece of design.



## Key Stage Suitability:

- KS3



# Dome and galleries

Explore our unique dome climb for a unique and amazing view across London!

**Climb 378 steps for an amazing view of the City from the Stone Gallery!**

**Be prepared**—We will send you risk assessment guidance when you book, however we always recommend that you do your own risk assessment prior to your visit. This can be booked with the team in advance and allows the teacher access to the Cathedral during sightseeing hours. Should anyone in your group be nervous/suffer from vertigo/mobility problems/asthma, please ensure that adults are available to remain with them at ground level in the Cathedral.

**No children can be left unaccompanied.**

Due to fire regulations, we regret there is no lift available to the Galleries.

**Timings**—Please allow a **minimum** of 45 minutes for the complete return climb . This is in addition to the time required for your guided session. You will be required to escort your students to the Galleries and **supervise them at all times**. The team from St. Paul's will not accompany you on the climb.

**Guidance on ratios for climbing the dome and galleries:**

0 - 2 years - one adult to three children

2 - 3 years - one adult to four children

4 - 8 years - one adult to six children

9 - 12 years - one adult to eight children

13 - 18 years - one adult to ten children

*Please note that this is the minimum required, we expect you to ratio according to the needs of your students. Supervising adults must be spaced evenly throughout the group.*



**Visiting with students who are unable to climb the dome?**

They don't have to miss out on the experience. We have a digital dome climb available which can be accessed via an internet enabled device. Speak to a member of the team to find out more.

# How to book

All educational groups must book before visiting

The **quickest** and **easiest** way to book is via our dedicated online booking portal. Please **follow the link** below to our online **Booking Portal**. Here you can select your preferred date and time slots from the live calendar. Please select one timeslot per class or up to a maximum of 35 students. Once you have chosen, it will ask you to create an account and fill in the details of your visit. Once submitted, we will be able to confirm your visit and send out all the information you require and your visit invoice. You can also find example itineraries and information about pricing here too.

**Guided** [sflstpaul.co.uk/tour/guided-visits/](https://sflstpaul.co.uk/tour/guided-visits/)

**Self-Guided** [sflstpaul.co.uk/tour/self-guided-visits/](https://sflstpaul.co.uk/tour/self-guided-visits/)

**Virtual** [sflstpaul.co.uk/tour/virtual-visits/](https://sflstpaul.co.uk/tour/virtual-visits/)

## Bespoke SEND sessions

We can run any of our sessions fully tailored to your group. If you would like to discuss what we can offer for you please just contact us direct.

## Visiting with students who may need additional support?

Please let us know as much information at the time of booking about your student's needs. This will allow us to plan and ensure that all student's get the maximum out of their visit to us.

We have lots available onsite including our 'Access to Learning' bundles which are available to support students with additional learning needs.

**FREE online resources** are available online to assist in preparation for your visit and to also help in the classroom after you have visited us.

To find out more visit our dedicated Learning Library, just search by Key Stage:

[stpauls.co.uk/our-learning-library](https://stpauls.co.uk/our-learning-library)