

SCHOOLS & FAMILY

# LEARNING

## Educational visits SECONDARY

INFORMATION FOR TEACHERS  
AND COMMUNITY GROUPS

KS3

KS4

KS5

SEND



# Welcome to the iconic cathedral in the City of London

St. Paul’s Cathedral can offer so much to support teaching in the classroom

## Who are we?

The Learning Department is based in St Paul’s Cathedral. We are a team who include teachers and education professionals with a wide range of specialisms. We work with both the amazing architecture and St. Paul’s role as a Christian place of worship, linking your session to the National Curriculum, your local agreed syllabus, and/or qualification specifications.

## What can teachers expect to gain by visiting?

We offer a diverse range of subject based sessions, which link directly into the building’s history and use as a place of worship. A visit to us will give your students the opportunity to put classroom learning in context through well structured, curriculum specific and engaging high quality workshops.

## What do we offer that is different?

After your initial booking, you will be assigned a dedicated Learning & Outreach Officer who will be your named point of contact throughout your time with us. They will contact you ahead of your visit to answer all your questions, discuss learning objectives and ensure that we can put as much in place as possible to support your students needs.

## Our sessions are inclusive

From 2025 we are working to ensure that all of our sessions are inclusive for all. Please do share as much information as possible with us before your visit about your students access needs, SEND support or EHCPs.

## We are recommended by teachers

100% of teachers who visited in 2025 would recommend visiting us!



Prices 2025/26 per student (inc VAT)	
Guided Session	£3.60
Guided Session + Dome	£6.60
Self-Guided	£3.00
Self Guided + Dome	£6.00
Virtual Visit	£1.80
Bursary available for qualifying schools	



# Explore St. Paul's

# General guided visit

A 'highlights' tour—perfect for an overview of the Cathedral

## What to expect:

- Learn about the importance and significance of the St Paul's Cathedral in Christian worship and its role as a the nations church.
- Visit tombs and memorials for significant people in the history of Britain.
- Explore and interpret the art and architecture of the building.

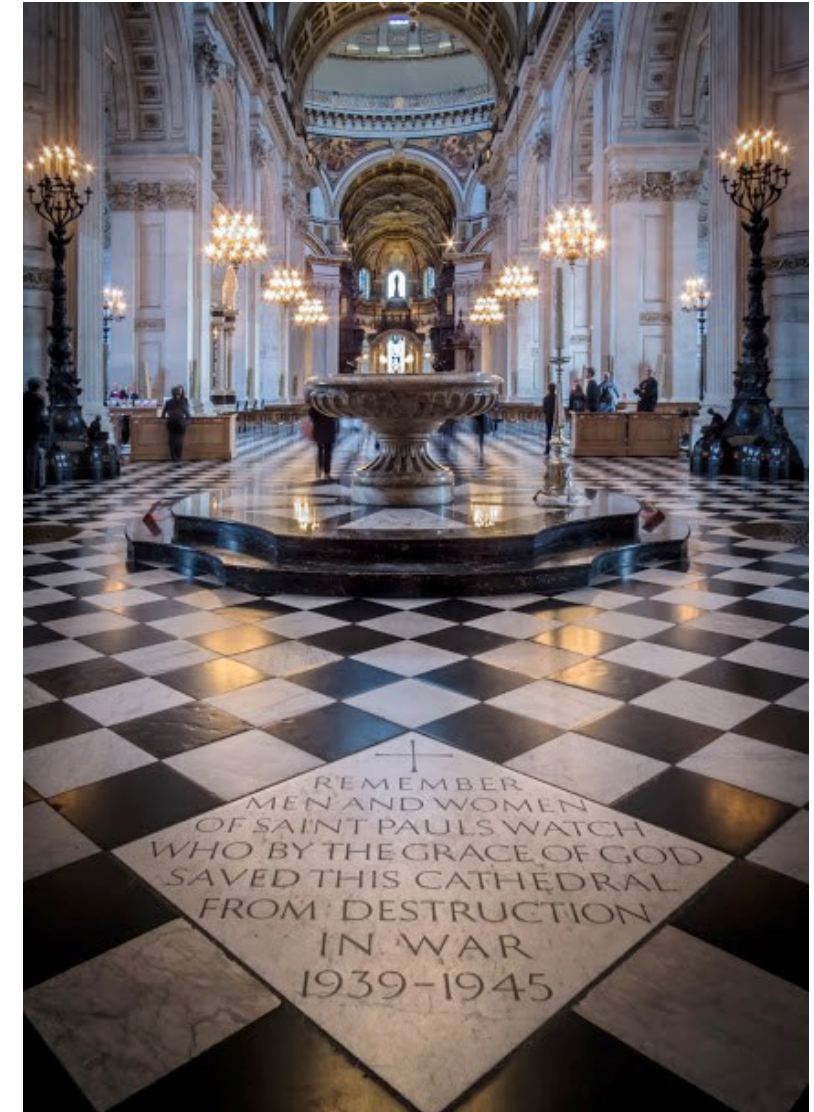
This session can be tailored to your aims, objectives, and needs of your class.

## Aims of the visit

- To learn about the history and significance of the Cathedral
- Explore diverse stories connected to St Paul's Cathedral

## Key Stage Suitability:

- All Key Stages





# The big issues

# Religious Studies

## Exploring Christian ethics

### What to expect:

This 90 minute session is split in two parts:

#### **Part 1 - Cathedral tour focusing on Christian Belief, Teaching and Practices (45 minutes)**

- Formal and informal prayer and worship.
- The meaning of the sacraments and festivals
- Sources of authority
- The role of the Church of England in the wider world, connecting to the thematic studies that can include; Conflict and Peace, Crime and Punishment, Human Rights and Social Justice and Relationships and Family.

#### **Part 2 - Question and answer session with a priest (45 minutes)**

Students are invited to ask their own questions to the priest during the session, exploring moral and ethical issues related to their learning, such as sanctity of life, evil and suffering, the existence and nature of God and doctrine of the Trinity, the challenges facing the Church today and any of the above themes included in the tour.



### Aims of the visit

- To develop Knowledge and Understanding of Christianity, Belief, Teaching and Practices, Philosophy and Ethics.
- Engage in open discussion and Q&A with an ordained member of the Church of England

### Key Stage Suitability:

- KS3—KS5
- Particularly suited to students of GCSE RS and A Level RS (Christianity, Philosophy or Ethics)



# Sacred space

# Religious Studies

## Experience a Christian place of worship

### What to expect:

- Bring to life RS/RE course content in an inspiring setting.
- Investigate the key design features of the cathedral and how it relates to Christian worship.
- View locations and examples of formal and informal worship and rites of passage.
- Observe signs and symbols of Christianity.
- Experience key vocabulary and theological concepts related to beliefs, teachings and practices of Christianity.



### Aims of the visit

- Learn about Christian beliefs, teachings and practices during a guided tour of St Paul's Cathedral.

### Key Stage Suitability:

- All Key Stages





# History set in stone: church, power and empire

## History

Explore the Cathedral Monuments and discover what they can reveal about the past

### What to expect:

- Explore the themes of the monuments through response pieces by contemporary poets, artists and historians created as part of the '50 Monuments in 50 Voices' project.
- Focus on a series of monuments in which they will take part in personal reflection, group discussions and have the opportunity to respond to probing and evaluative questioning.
- Share opinions and feelings around the national conversation taking place about public monuments and contested history.

### Aims of the visit

- Discover how the monuments at St Paul's Cathedral can inform understanding of the British Empire and its influence and impact on the wider world.
- Develop student's historical skills and critical reflection.

### Key Stage Suitability:

- KS3
- KS4
- KS5





# The Three Dimensions of a Complete Life: Martin Luther King at St Paul's History

Learn about the work of the Cathedral to promote racial justice

## What to expect:

- Examine the speech given by Dr Martin Luther King Jr. at St Paul's Cathedral on the 6th December 1964.
- Explore the three parts of the speech with opportunities for self-reflection, self-identity and positive goal setting.
- Learn about St Paul's history beyond 1964 and how it participated in world events and popular protest.
- Supports PSHE.

## Aims of the visit:

- Learn more about St Paul's place in the wider world of injustice and equality and civil rights
- Identify and develop positive attributes of active citizens
- Recognise strategies that build positive community engagement
- Provide real life opportunities to cover the PSHE curriculum for Health and Wellbeing and Living in the Wider World.

## Key Stage Suitability:

- KS3
- KS4
- KS5





# Restoration England: From Crown to Cathedral

## History

Bring to life the themes in the AQA GCSE History specification

Developed with



### What to expect:

- Explore the Cathedral's story before and after the Great Fire of London, consider the legacy of the Civil War, and the destruction of the pre-fire Cathedral.
- Examine archival material and Wren's Great Model to discover how St Paul's Cathedral was designed and rebuilt for the people of London.
- Discover the new Anglican Cathedral's baroque style and materials and discuss how it is a product of Restoration culture.
- Discover how Bishops at St Paul's Cathedral contributed to the return of the Anglican Church.
- Discuss what role the Cathedral played in the political, economic, social and cultural lives of Londoners in Restoration England and beyond.



### Aims of the visit

- Use the skills of a historian to understand the key considerations they have when they use a site as a source of evidence, such as how design reflects the culture, values, and fashions of the people at the time.
- Students will consider second order concepts, such as significance, change and continuity, and cause and consequence.

### Key Stage Suitability:

- KS4





# History around us

# History

Specifically designed for schools studying the OCR GCSE History syllabus and have chosen St Paul's Cathedral as their site study.

## What to expect:

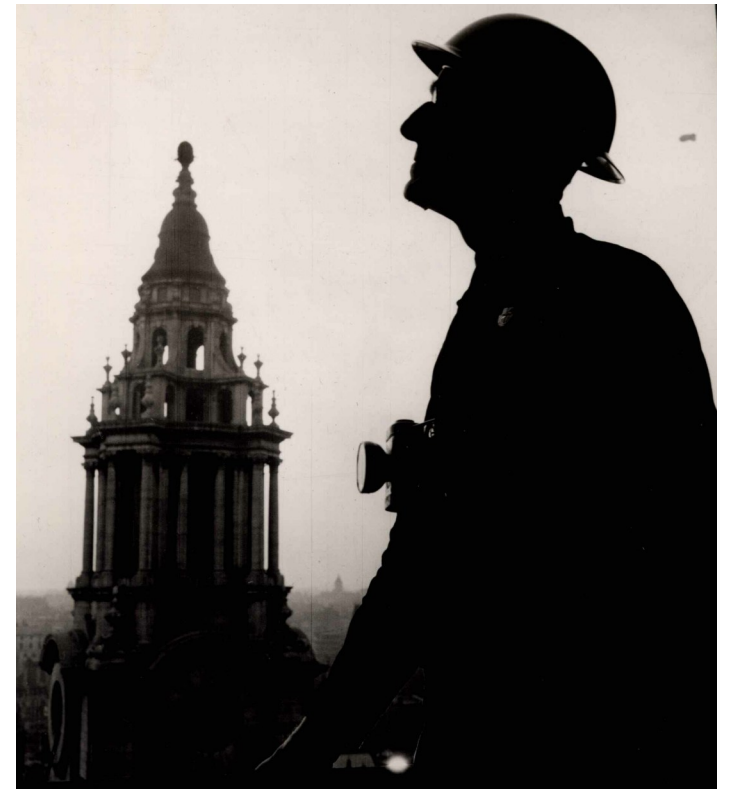
- Explore the Cathedral to learn about turning points in its history including, the Great Fire of London and subsequent rebuilding, the eighteenth/nineteenth century addition of monuments to the Cathedral floor, World War Two and the St Paul's Watch, and modern events including the consecration of the first female Bishop of London.
- Discover how the Cathedral has changed over time, in its design, physical features, function and significance.
- Understand key decisions relating to the Cathedral, such as its location.
- Examine the role of different individuals in the Cathedral's history, including Sir Christopher Wren, Elfreda Audsley, the Duke of Wellington and Martin Luther King.

## Aims of the visit

- Use a historic site as evidence of the historical context at key points in time, understanding what it can tell us about lives and attitudes in different periods.

## Key Stage Suitability:

- KS4





## St Paul's role as a church and as a business

### What to expect:

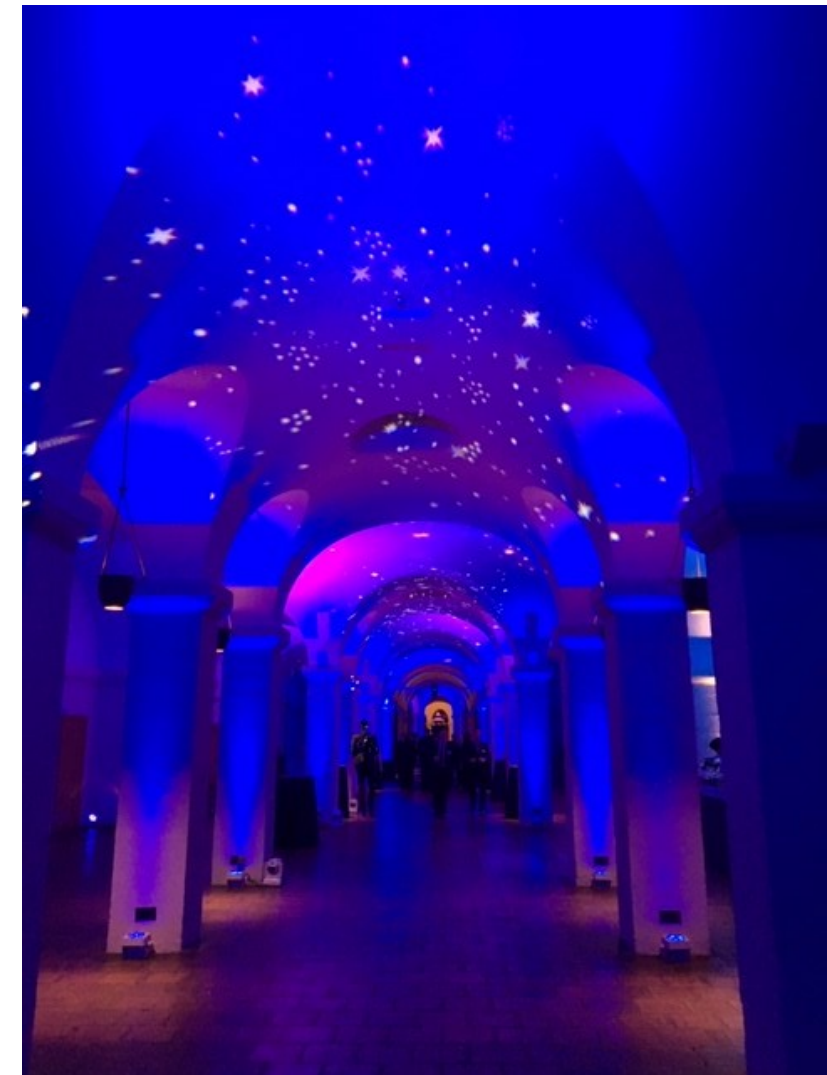
- Witness a Grade 1 listed building, and identify and discuss the challenges faced daily by this multi-purpose place of prayer, worship and business.
- Consider strategic planning linked to business practice and the impact of Christian ethics teaching related to human rights, sustainability and stewardship.
- Subject to availability, students will also spend time with a member of the Corporate Events or Visitor Engagement Team.
- Visit the Shop and discover how ethics impacts retail.

### Aims of the visit

- Explore the question, 'is it possible for St Paul's Cathedral to be both a place of Christian worship and a viable business?'
- Discuss the unique challenges faced for a place of prayer, worship, and business and how an ethical balance is maintained.

### Key Stage Suitability:

- KS4
- KS5





### What to expect:

- Understand the use of religious symbolism represented in the artworks and architecture, including works by William Holman Hunt, Gerry Judah, Henry Moore, Josephine Vasconcellos, Hughie O'Donoghue and Bill Viola.
- Discuss how contemporary current affairs can shape viewpoints of artwork.
- Reflect on the messages the artists have tried to express and will have the opportunity for discussion, questions, comments and personal responses.
- Students will also cover, when available, temporary installations of art work.

### Aims of the visit

- Investigate acclaimed artworks in an iconic space
- Examine art as a tool for reflection
- Develop student critical thinking, language and personal expression about the importance of artwork in a the context of a sacred space.

### Key Stage Suitability:

- KS3
- KS4
- KS5





# Building a Cathedral

# Maths and Science

Discover Wren's masterpiece through the exploration of Maths and Science

## What to expect:

- Explore the structural needs and design of an iconic London landmark.
- Go behind the scenes at St Paul's Cathedral to visit unique spaces, such as the Geometric Stairs, Triforium, and The Great Model.
- Take part in an engineering challenge to explore the effect of forces.

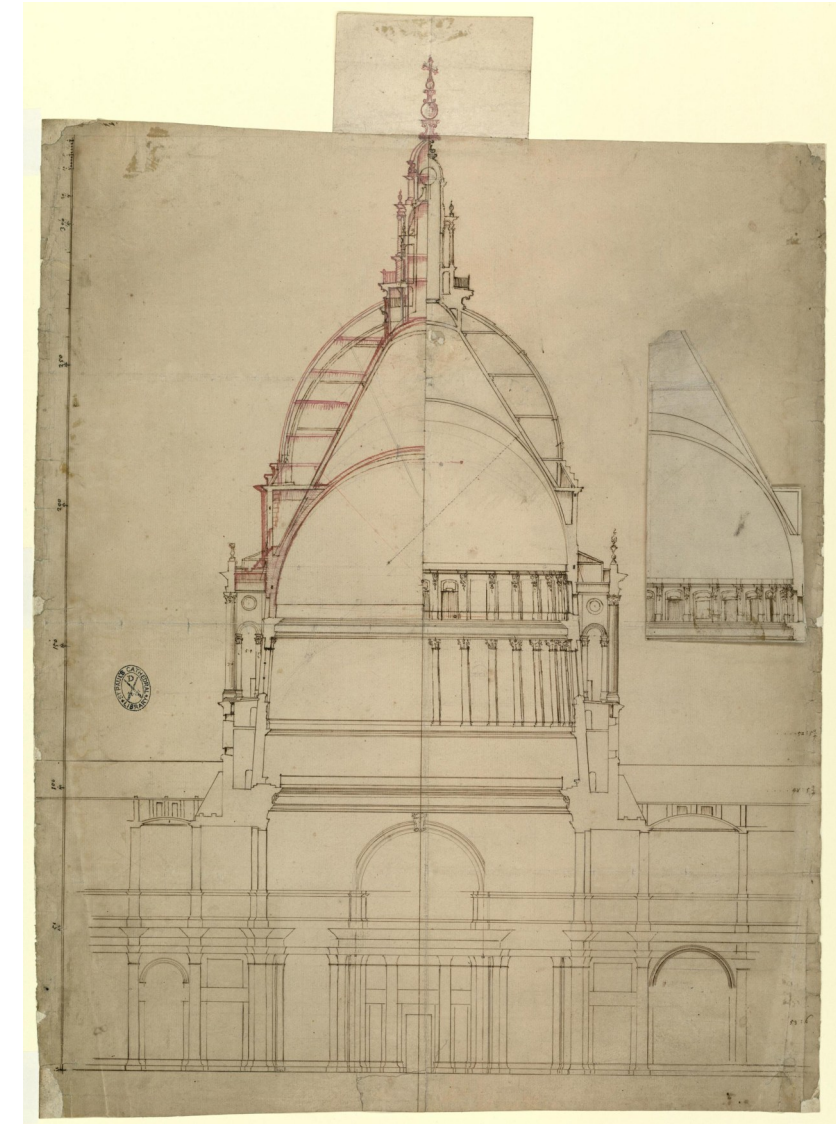
## Aims of the visit

- Explore real life scientific and mathematical principles in action.
- Develop student critical thinking and discussion related to their experiences.

## Key Stage Suitability:

- KS3/4

please note that there are steps on this session. If a member of your group has physical access requirements please let us know in advance.





# Sing at St Paul's

## Music

### Become a chorister of St Paul's for a day

- Explore the music and architecture of St Paul's through a guided Cathedral tour, including singing under the Dome, Geometric Staircase and in the OBE Chapel
- Take part in a singing workshop led by a Cathedral musician in the same room where our world-leading choristers rehearse for special services every day
- Share in our iconic building's music-making through a performance for parents/carers and the general public
- Participate in two prior in-school visits from a Cathedral musician to prepare you for your Sing at St Paul's day.

#### Aims of the visit

- To experience the day-to-day activities of the choristers at St Paul's
- Enhance the teaching of RS/RE, exploring how music has played an integral role in worship on our site for more than a century
- Explore the performance element of the DfE's Model Music Curriculum (2021) in one of the city's landmarks
- Become a musical partner school of St Paul's through two preparatory in-school singing sessions.

#### Key Stage Suitability:

- KS3
- KS4
- KS5



#### Please note:

- This session is **subject to limited availability**
- Suitable for schools **within the M25** due to outreach sessions
- If you would like to book this session please email [learning@stpaulscathedral.org.uk](mailto:learning@stpaulscathedral.org.uk) direct



# Dome and galleries (including the Whispering Gallery)

Explore our unique dome climb for a unique and amazing view across London!

**Climb 378 steps for an amazing view of the City from the Stone Gallery!**

**Be prepared**—We will send you risk assessment guidance when you book, however we always recommend that you do your own risk assessment prior to your visit. Risk assessment visits can be booked with the team in advance, and they allow the teacher access to the Cathedral during sightseeing hours. Should anyone in your group be nervous/suffer from vertigo/mobility problems/asthma, please ensure that adults are available to remain with them at ground level in the Cathedral.

**No children can be left unaccompanied.**

Due to fire regulations, we regret there is no lift available to the Galleries.

**Timings**—Please allow a **minimum** of 45 minutes for the complete return climb. This is in addition to the time required for your guided session. You will be required to escort your students to the Galleries and **supervise them at all times**. The team from St Paul's will not accompany you on the climb.

**Required ratios for the Dome climb, access to the Whispering Gallery, and Dome Galleries:**

4 - 8 years - one adult to six children to Stone Galleries only

9 - 12 years - one adult to eight children to Stone Galleries only

13 - 18 years - one adult to ten children to Golden Gallery (subject to availability)

*Please note that this is the minimum required, we expect you to ratio according to the needs of your students. Supervising adults must be spaced evenly throughout the group.*



**Visiting with students who are unable to climb the dome?**

They don't have to miss out on the experience. We have a digital dome climb available which can be accessed via an internet enabled device. Speak to a member of the team to find out more.



# How to book

All UK educational groups must book before visiting

You can book via our dedicated online booking portal. Please **follow the link** to our online **Booking Portal**. Here you can select your preferred date and time slots from the live calendar. Please select one timeslot per class, or up to a maximum of 35 students. Once you have chosen, it will ask you to create an account and fill in the details of your visit. Once submitted, we will be able to confirm your visit and send out all the information you require. Your invoice will then follow.

To **book** visit our bookings portal  
**[sfl.stpauls.co.uk](https://sfl.stpauls.co.uk)**

If you need any further assistance please **contact us** direct **[learning@stpaulscathedral.org.uk](mailto:learning@stpaulscathedral.org.uk)** or **+44 (0) 207 246 8353**

## Visiting with students who may need additional support?

We aim that all of our sessions are full accessible, but to ensure that your students get the most out of your time with us please let us know as much detail as possible about your students needs and preferences.

We have lots available onsite including our 'Access to Learning' bundles which are available to support students with additional learning needs.

**FREE online resources** are available to support you in the classroom.

To find out more visit our dedicated digital resources hub

**[stpauls.co.uk/our-digital-resources](https://stpauls.co.uk/our-digital-resources)**